

**“Today is #WorldHealthDay! I am using the opportunity to invite you all to reflect on the importance of health & think of those who are fighting day & night to keep us safe from threats like #coronavirus.” WHO DG, Dr. Tedros Adhanom Ghebreyesus**

## Highlight

- A total of 81,235 (3,239 today) confirmed cases from 21 countries in the East Mediterranean Region and total deaths are at 4,287 (144 today).
- Lebanon is still in level 3 of COVID 19 transmission scenarios “Lebanon is experiencing cases clusters in time, geographic location and/or common exposure (Clusters of cases)”.
- WHO and the world commemorate nurses around the globe who are the frontline heroes fighting COVID-19.

Global update <i>as per WHO dashboard_07 April 2020 at 6pm</i>	
Globally cases	1,279,722 (68,508 new)
Countries, areas or territories with cases	208 countries (0 new)
Total deaths (CFR: 3.4%)	72,616 (4,950 new)
Confirmed cases in China	83,071 (66 new)
Confirmed cases in USA	333,811 (26,493)
Confirmed cases in Spain	135,032 (4,273)
Confirmed cases in Italy	132,547 (3,599)
<b>WHO RISK ASSESSMENT</b> Global Level - Very High	

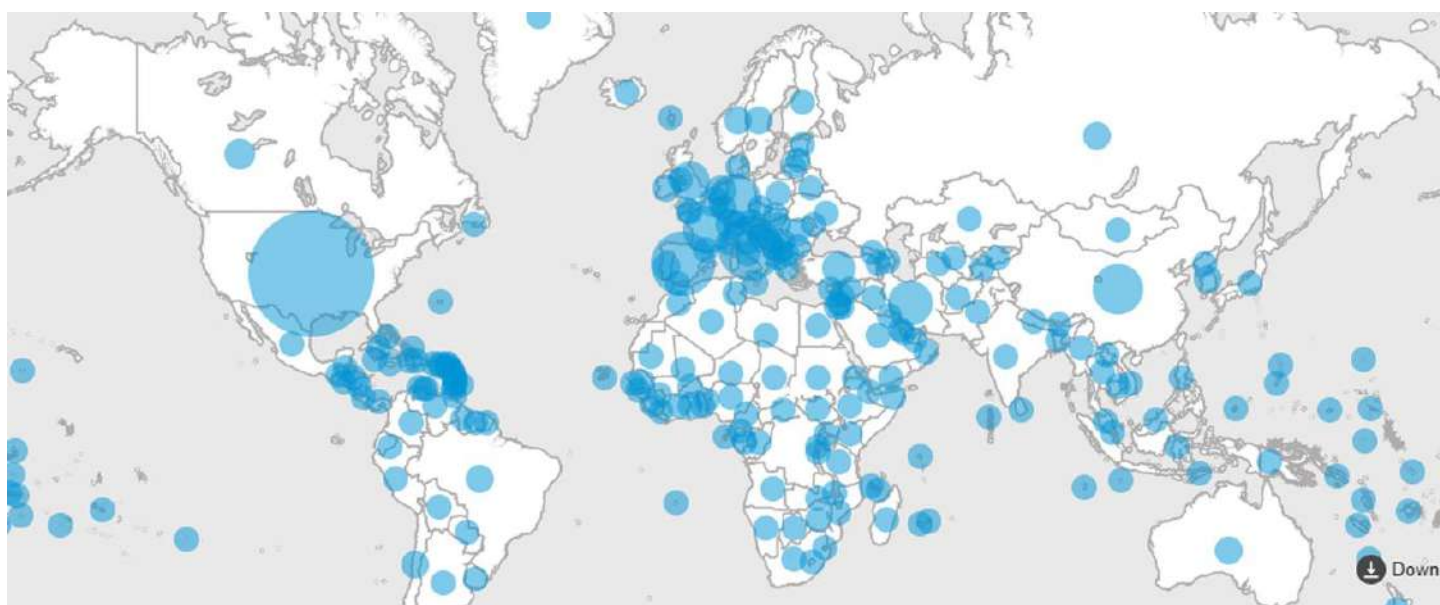


Figure 1. Countries, territories or areas with reported confirmed cases of COVID-19, 7 April 2020



# Distribution of COVID-19 cases as reported by the Epidemiological Surveillance Unit at the MOPH dashboard at 4pm

Figure 1: Cases by age group

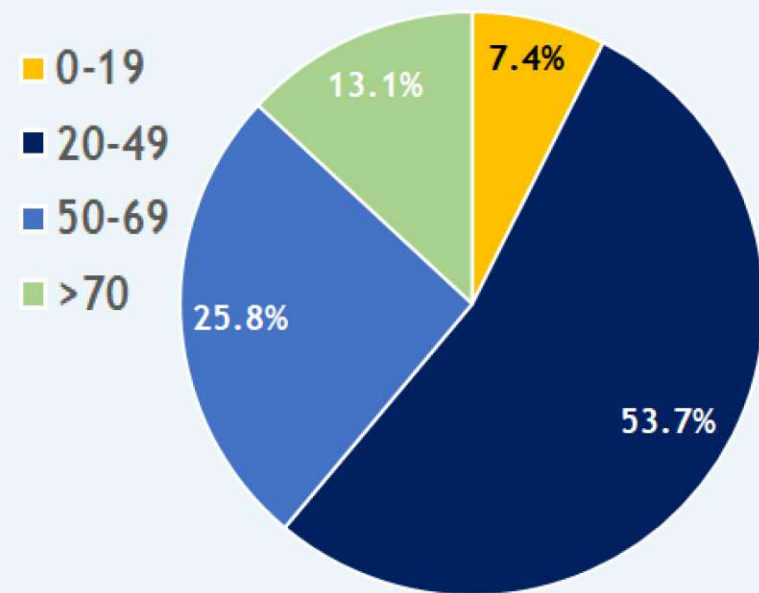
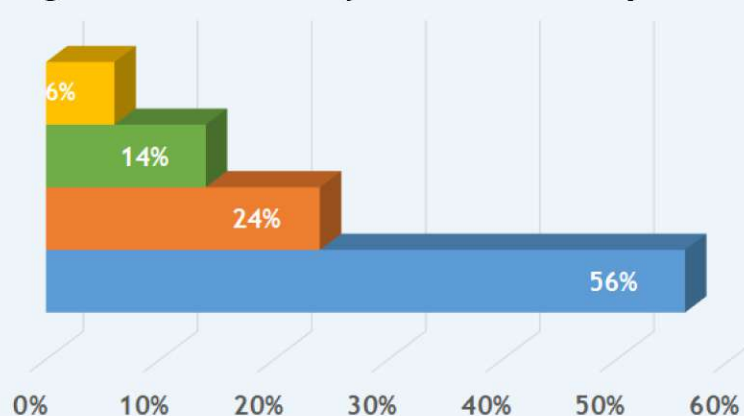


Figure 2: Cases by source of exposure



■ Unidentified Source ■ Under Investigation\*  
 ■ Travel Related ■ Contact with Confirmed Case

Figure 3: Cases by clinical presentation

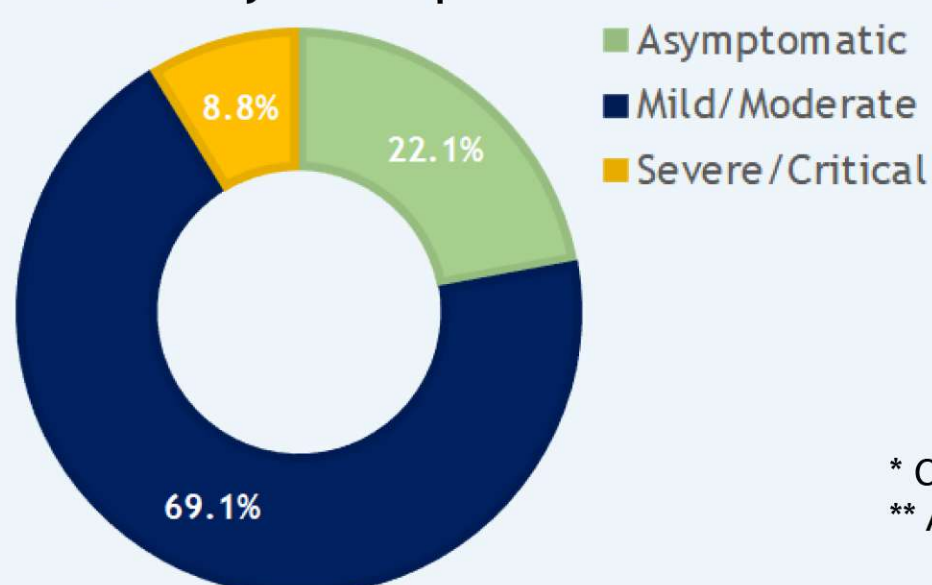


Figure 4: Cases by date of confirmation

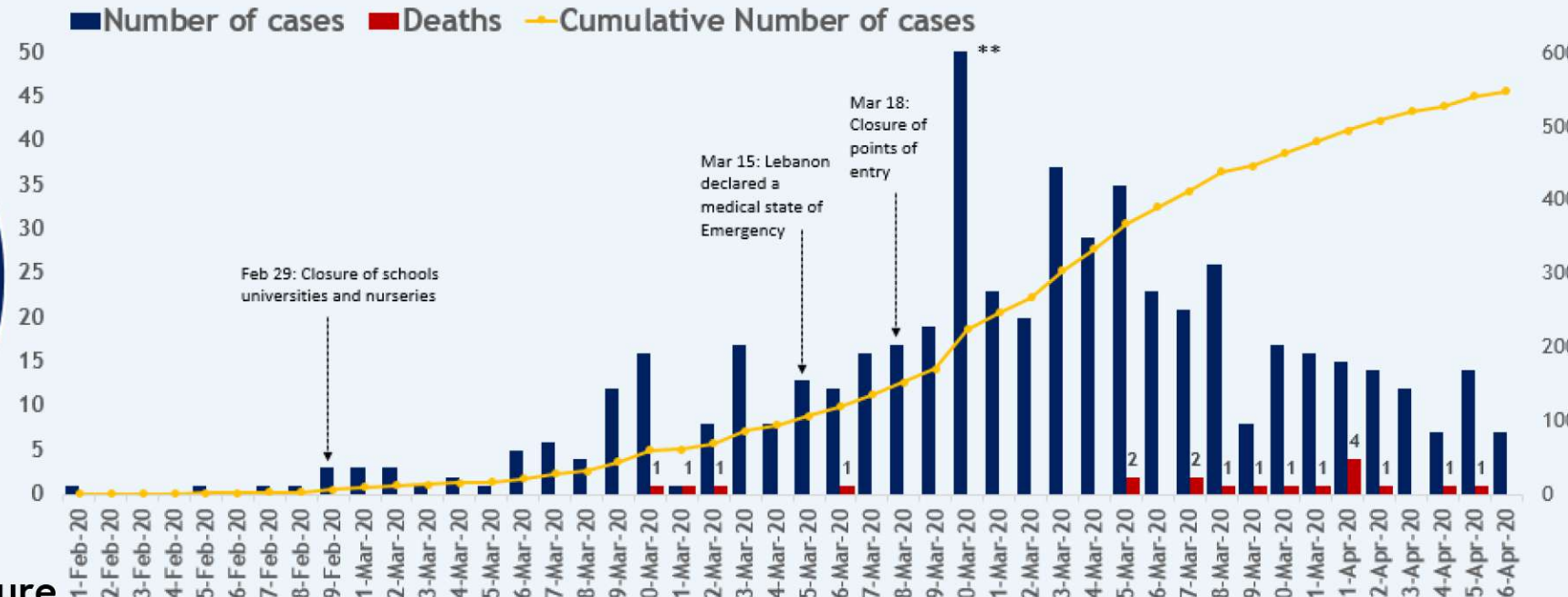


Table 1: Distribution of fatalities by age group

Age (years)	Deaths (n)	CFR
<10y	0	0.0%
10-19y	0	0.0%
20-29y	0	0.0%
30-39y	0	0.0%
40-49y	1	1.2%
50-59y	4	4.9%
60-69y	3	5.2%
70-79y	7	16.7%
80+y	4	13.8%
<b>Total</b>	<b>19</b>	<b>3.5%</b>

\* Cases under investigation have not yet been classified by exposure

\*\* Addition of new reporting laboratories

**548 Cumulative cases of COVID-19**

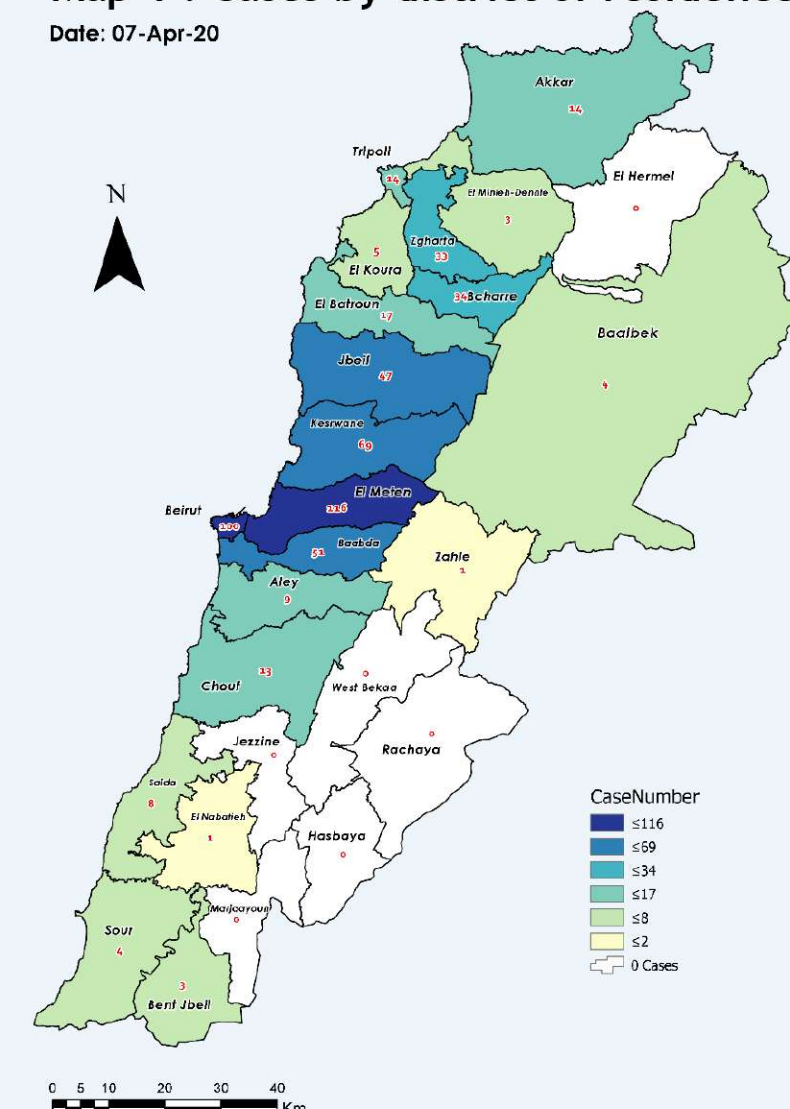
- 7 new cases
- 48 healthcare workers
- 19 associated deaths

**Call center:**

- 4598 Cumulative calls received
- 331 referred to RHUH

Map 1 : Cases by district of residence

Date: 07-Apr-20





## WORLD HEALTH DAY: Nurses and Midwives

Strengthening nursing and midwifery to achieve health for all  
A strong nursing and midwifery workforce is key to the achievement of universal health coverage.

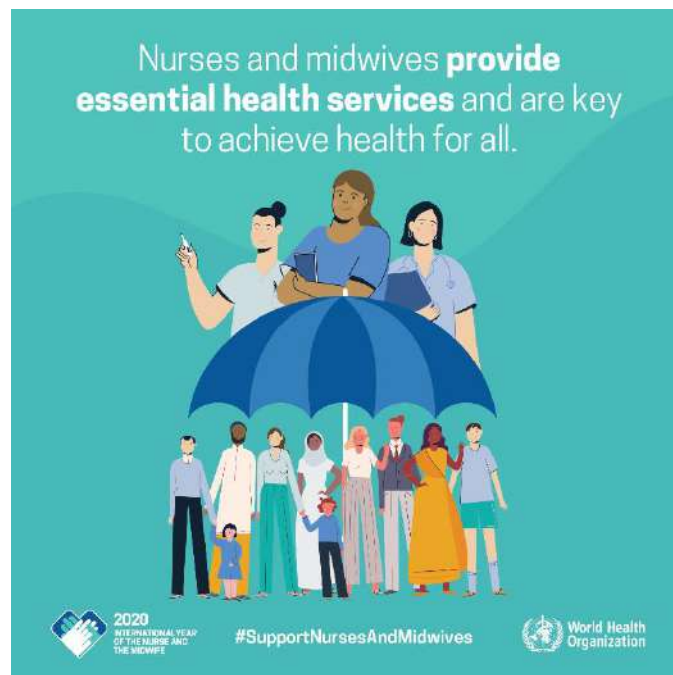
Educating nurses and midwives to international standards makes economic sense. It saves resources by reducing the need for costly and unnecessary interventions and increases quality of care and health for all.

Strengthening nursing and midwifery – and ensuring that nurses and midwives are enabled to work to their full potential – is one of the most important things we can do to achieve universal health coverage and improve health globally. But too often nurses and midwives are undervalued and unable to fulfil their true potential.

In 2020 we aim to ensure that all nurses and midwives operate in an environment where they are safe from harm, respected by medical colleagues and community members, have access to a functioning health-care service and where their work is integrated with other health-care professionals.

By developing nursing and midwifery, countries can achieve the triple impact of improving health, promoting gender equality and supporting economic growth.

Strengthening nursing and midwifery will have the additional benefits of promoting gender equity (SDG5), contributing to economic development (SDG8) and supporting other Sustainable Development Goals.



### That's why the World Health Assembly has designated 2020 the International Year of the Nurse and the Midwife.

Join WHO and partners including, the International Confederation of Midwives (ICM), International Council of Nurses (ICN), Nursing Now and the United Nations Population Fund (UNFPA) in a year-long effort to celebrate the work of nurses and midwives, highlight the challenging conditions they often face, and advocate for increased investments in the nursing and midwifery workforce.

### Boost nursing and midwifery leadership and influence to improve health services

Nurses and midwives play a vital role in providing health services. These are the people who devote their lives to caring for mothers and children; giving lifesaving immunizations and health advice; looking after older people and generally meeting everyday essential health needs. They are often, the first and only point of care in their communities. The world needs 9 million more nurses and midwives if it is to achieve universal health coverage by 2030.

Nurses and midwives are already advocates and innovators in their communities, clinics, hospitals and in the health care system. But they must also be properly valued and represented in health leadership roles where they can guide health policy and investment.

Nurses and midwives can be the answer to so many of the world's health problems but first we must overcome professional, socio-cultural and economic barriers.

### Commit political will and funding to improve nursing and midwifery

Universal health coverage is a political choice. So is domestic investment in nursing and midwifery.

### Five key investment areas

- Invest in more nurse-led and midwife-led services enabling nurses and midwives to work to their full potential
- Employ more specialist nurses





- Make midwives and nurses central to primary health care, providing services and supervising community health workers
- Support nurses and midwives in health promotion and disease prevention
- Invest in nursing and midwifery leadership

#### State of the World's Nursing in 2020

This report, to be launched in April 2020, will provide a global picture of the nursing workforce and support evidence-based planning to optimize the contributions of this workforce to improve health and wellbeing for all and to make meaningful progress toward UHC and the SDGs. The report will set the agenda for data collection, policy dialogue, research and advocacy, and investment in the health workforce for generations to come.

#### WHO Guides

- Coronavirus disease (COVID-19) outbreak: rights, roles and responsibilities of health workers, including key considerations for occupational safety and health. [Click here](#).
- Health workers exposure risk assessment and management in the context of COVID-19 virus. [Click here](#).

Useful Links	Important numbers	
<ul style="list-style-type: none"><li>➤ WHO real time <a href="#">dashboard</a></li><li>➤ WHO <a href="#">COVID-19 page</a></li><li>➤ Protect yourself (<a href="#">English/Arabic</a>)</li><li>➤ Q&amp;A (<a href="#">English/Arabic</a>)</li><li>➤ WHO Lebanon <a href="#">website</a></li><li>➤ WHO Lebanon <a href="#">Facebook</a> <a href="#">Twitter</a> <a href="#">Instagram</a></li></ul>	<ul style="list-style-type: none"><li>➤ MOPH Hotline 1214</li><li>➤ Airport quarantine section 01-629352</li><li>➤ Preventive medicine center 01-843769   01830300</li></ul>	<ul style="list-style-type: none"><li>➤ <b>Call Centre 01-594459</b></li><li>➤ Preventive medicine center 01-843769   01-830300</li><li>➤ Epidemiological Surveillance Unit 01-614194   01-614196</li></ul>
For more information Hala Habib   Communication Consultant   +961 3 870459		